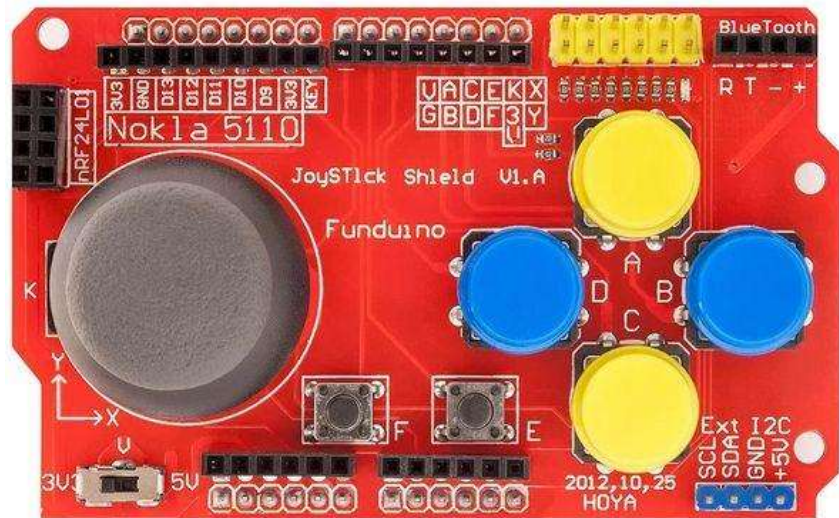
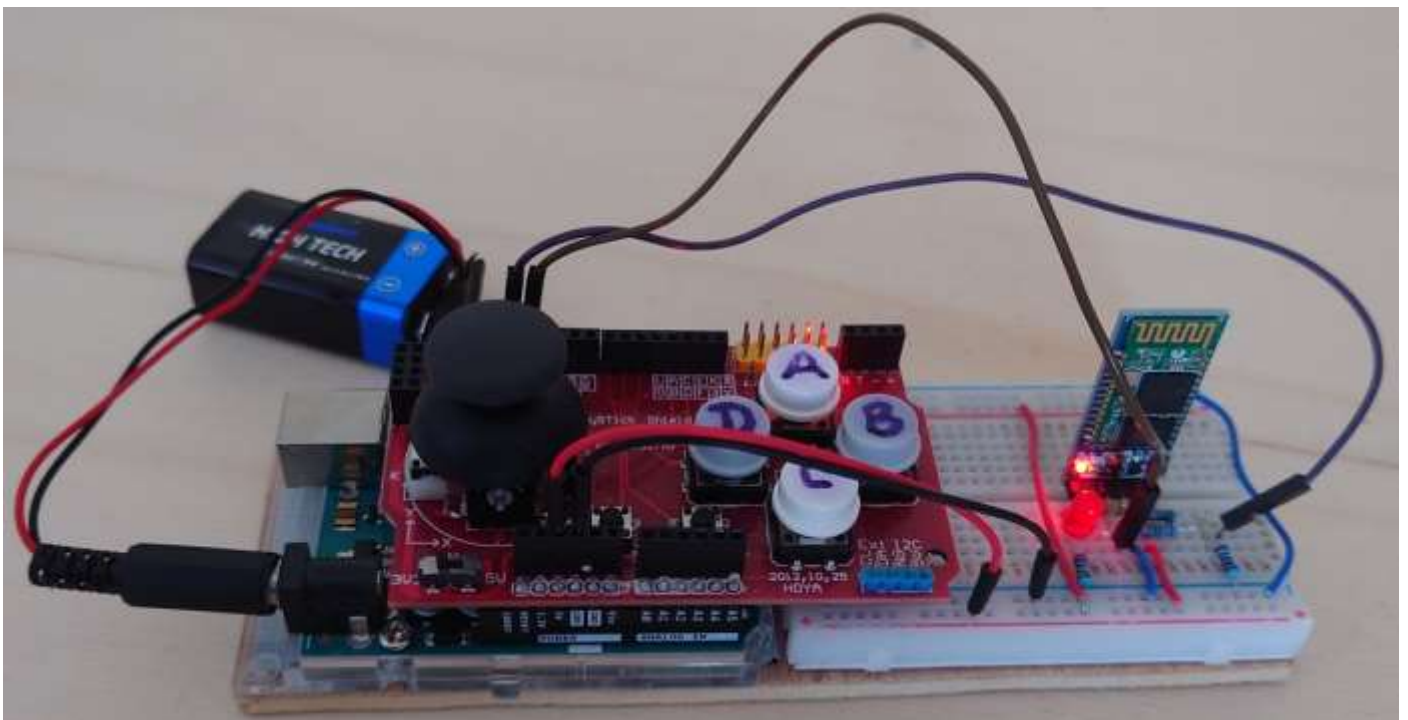


Control of the Case Creole by Bluetooth from 5 buttons on the Joystick Shield



The 4 large buttons A, B, C and D plus the small button E will be used
(The joystick itself and the small F button are not used)



Button A – management of the upper door of the 1st floor (Servomotor)

Press1 >>> X=10 Y=10 >>> Door open

Press2 >>> X=11 Y=11 >>> Close the door

Button C – Management of the low door to the RC (Servomotor)

Press1 >>> X=8 Y=8 >>> Door open

Press2 >>> X=9 Y=9 >>> Close the door

Button B – Management of exterior lamps

Pressure1 >>> X=6 Y=6 >>> Lighting of low lamps

Press2 >>> X=7 Y=7 >>> Lower lights off

Button D – Management of 1st floor wall lights

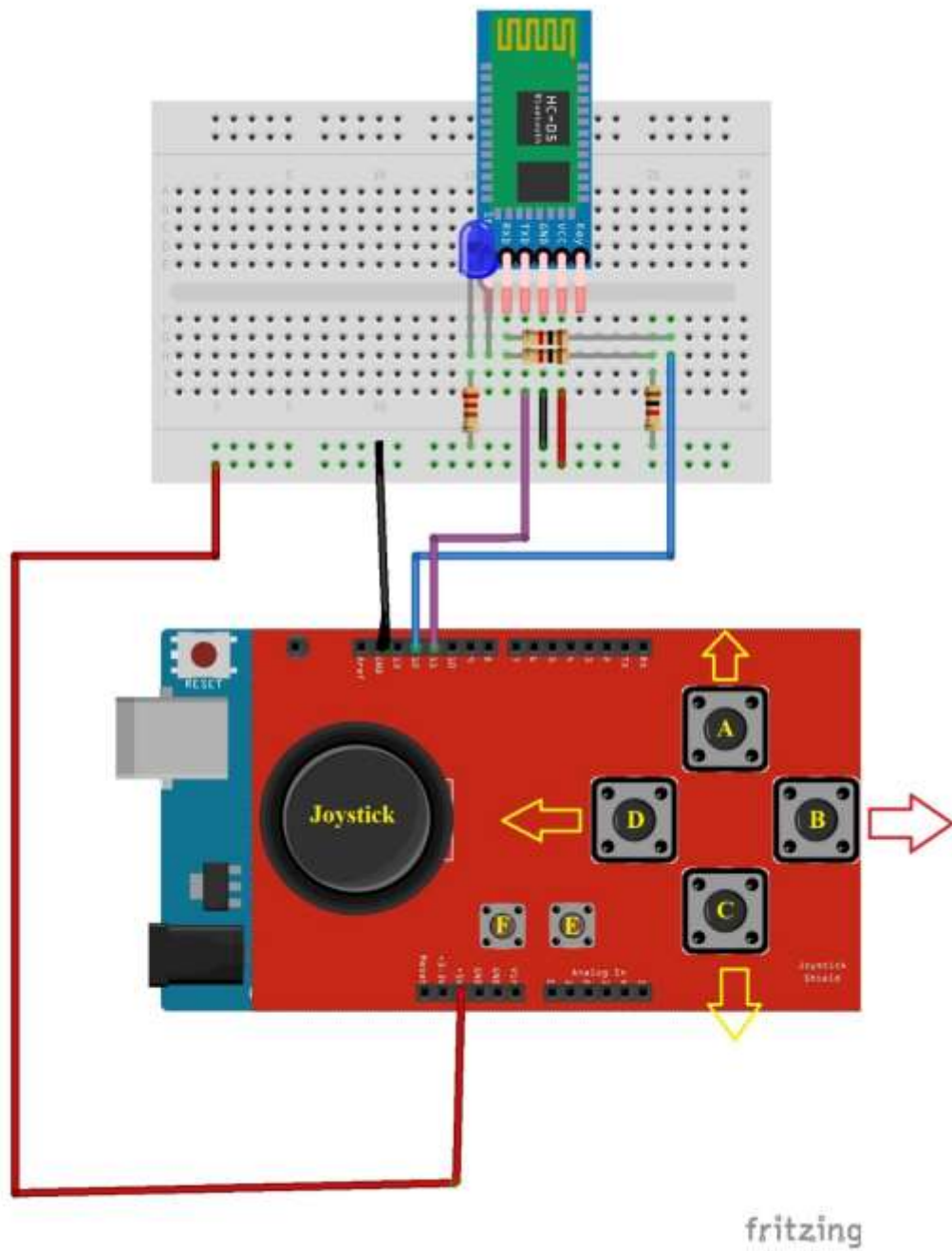
Pressure1 >>> X=4 Y=4 >>> Wall lighting

Pressure2 >>> X=5 Y=5 >>> Lights off

Button E – Bell Management (Small Servo Motor)

Press1 >>> X=3 Y=3 >>> The bell is shaken - Ringtone

Press2 >>> X=127 Y=127 >>> Bell ringing stop



The remote control is powered by a 9 volt pressure battery